



# Warren County Heritage Area Transportation Plan

*Heritage is both what we have been left by others and what we create today and leave for future generations.*

The Heritage Area of Warren County is the next part of our region to experience substantial development and travel demand growth.

Roads are usually the last public infrastructure to be built in response to development pressure and the associated travel demand. If left until after development has occurred it is an expensive and painful process, and is often off-target with community expectations.

Where individual land ownership rights are vigorously protected, transportation investment often influences land use decisions.

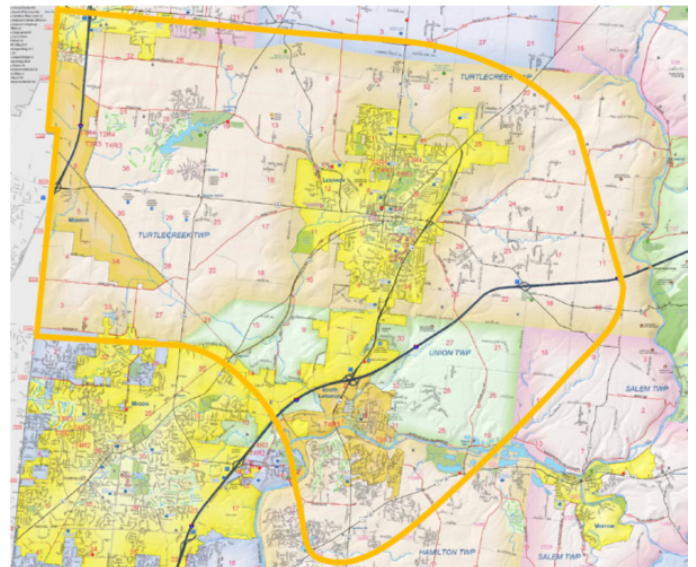
Connectivity without a connector – cleaning up the network and providing routing options that fit within the context of the area can improve mobility.

When defining quality of life for this section of Warren County in terms of the transportation options, decisions should be made locally.

Technology and alternative fuels are increasing, not diminishing, travel demand.

## The Warren County Heritage Area Transportation Plan will:

- Articulate local context for addressing increased travel demand.
- Help understand existing and developing transportation problems.
- Confirm criteria for evaluating various strategies to address problem areas, including relative importance of: safety, accessibility, connectivity, mobility, environmental resources, cultural and historical resources, design elements, sustainability, and others.
- Identify the possible range of actions or “projects” that should be advanced for more detailed evaluation.



# WARREN COUNTY SR63 PRIORITY PROJECT

**Route 63 between Union Road and Route 741 needs to be improved.**

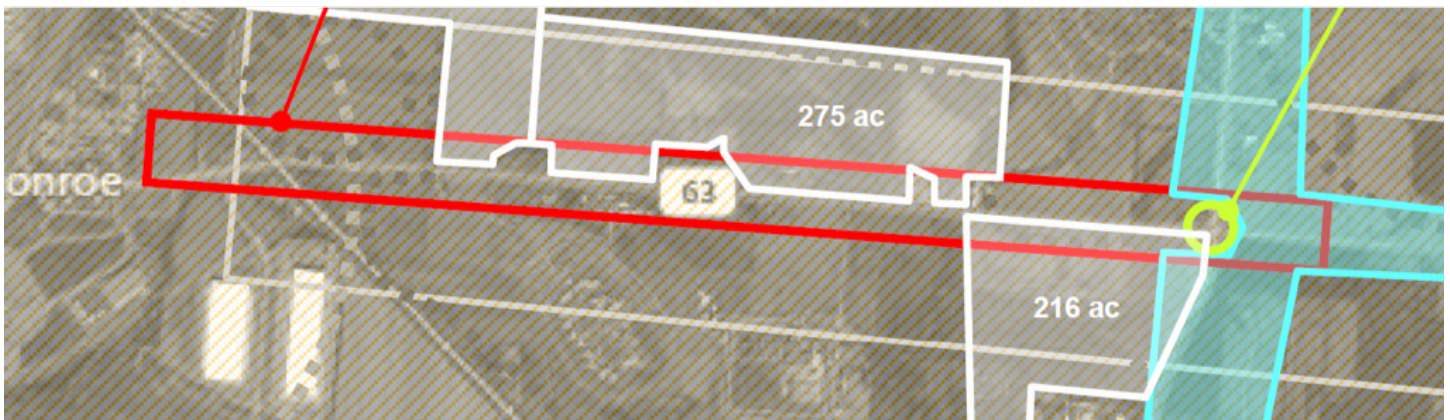
**Regional traffic demand patterns and localized development have caused transportation problems related to traffic growth, facility age, high crash rates, and changing types of trips, drivers and vehicles.**

## **Improvements are needed to:**

- Accommodate existing and future traffic and travel demand;
- Correct physical deficiencies and provide safer travel and operating conditions;
- Better accommodate different trip and vehicle types; and
- Provide for improved mobility; and
- Define access points along the route.

## **Other considerations in design of the roadway include:**

- Integrating community goals that would benefit from concurrent development with the project;
- Improving the Quality of Life of the local community;
- Respecting the historic context and character of the area; and
- Protecting the environment.



The project team is making design decisions based on community input and the best long-term value for Warren County, supported by benefit cost analysis.

This Priority Project is taking place in the context of a larger transportation planning effort to identify improvements needed for safe and efficient travel options in the broader travel shed. (SEE OTHER SIDE)